



Stud Welding DIRECT

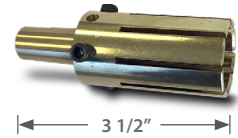


Drawn Arc Accessories

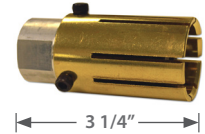
Tapered Base Chuck	SIZE	Part Number	SIZE	Part Number
	1/4	4182501	5MM	4181971
	5/16	4183121	6MM	4182361
	3/8	4183751	8MM	4183121
	1/2	4185001	10MM	4183931
	5/8	4186251	(1/4" HCA)	
	3/4	4187501	(3/8" HCA)	
	7/16	4184381		



Headed Concrete Anchor Chuck	SIZE	Part Number
<i>Available with Tapered Base or 1/2 - 20 Thread.</i>	1/4	4181/4HCA
<i>Tines & Bases also Sold Separately.</i>	3/8	4183/8HCA
	1/2	4181/2HCA
	5/8	4185/8HCA



Shear Connector Chuck	SIZE	Part Number
<i>Available with 1/2 - 20 Thread.</i>	3/4	4183/4SC
<i>Tines & Bases also Sold Separately.</i>	7/8	4187/8SC
	1	41810SC



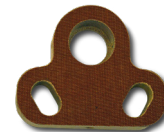
Ferrule Grip Closed	SIZE		Part Number	Grip Dia.
	1/4	Fits Small	4192501	.380
	5/16	Fits Small	4193121	.445
	3/8	Fits Small	4193751	.505
	7/16	Fits Small	4194371	.585
	1/2	Fits Small	4195001	.650
	5/8	Fits Medium	4196251	.785
	3/4	Fits Medium	4197501	1.030
	7/8	Fits Large	4197510	1.203



Ferrule Grip Split	SIZE		Part Number	Grip Dia.
	1/4	Fits Small	4192503	.380
	5/16	Fits Small	4193123	.445
	3/8	Fits Small	4193753	.505
	7/16	Fits Small	4194373	.585
	1/2	Fits Small	4195003	.650
	5/8	Fits Medium	4196253	.785
	3/4	Fits Medium	4197503	1.030
	7/8	Fits Large	4198753	1.203
	1	Fits Large	4191003	1.406



Footpiece Closed - Universal	SIZE	Part Number
	Small	4170061
	Med.	4170062
	Lg.	4170063



Footpiece Split - Universal	SIZE	Part Number
	Small	4170064
	Med.	4170065
	Lg.	4170066





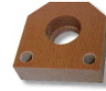
Stud Welding DIRECT



Drawn Arc Accessories

Footpiece Closed

	SIZE	Part Number
Fits OBO HP312	Small	4170019
	Med.	4170020
	Lg.	4170063



Footpiece Split

	SIZE	Part Number
Fits OBO HP312	Small	4170011
	Med.	4170012
	Lg.	4170066



Bi-Pod Footpiece

	SIZE	Part Number
Fits OBO HP312	Small	4170021
	Med.	4170022



Inert Gas Footpiece

	SIZE	Part Number
Fits OBO HP312	Med.	4170013
Universal	Med.	4170067



(gas fitting sold separately)

Legs

SIZE	Part Number
5/16" x 7"	4170301
5/16" x 9"	4170302
5/16" x 14"	4170303
5/16" x 24"	4170305
5/16" x 36"	4170306
3/8" x 14"	4170307
3/8" x 24"	4170308



Gas Spark Shield

SIZE	Part Number
1.16" Dia.	4070104
Universal 7/8"	4170014



Standard Spark Shield

SIZE	Part Number
1.16" Dia.	4170202



Y Anchor Chuck

SIZE	Part Number
1/4"	418250Y
3/16"	418187Y



Y Anchor Foot Plate

SIZE	Part Number
1/4"	4170026
3/16"	4170027





Stud Welding DIRECT



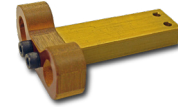
Drawn Arc Accessories

Thru Deck Accessories

WTD Extension Assembly
Foot Only

Part Number

4170080
4170081



Thru Deck Accessories

SIZE

Part Number

Flat Grip	3/4" (1.06 NECK)	4197504
Flat Grip	7/8" (1.29 NECK)	4198750
Flat Grip	5/8"	4198755
Flat Grip	1" (1.406 NECK)	4198754
Heavy Duty Grip	3/4"	4197505
Heavy Duty Grip	7/8"	4198751



Insul-Twist Chuck

SIZE

Part Number

.125 x .250	4182507
.125 x .750	4182510



Ferrule Tubing & Ferrule Bushing	STUD SIZE	I.D	O.D	Tube	Bushing
Ferrule Tube for:	#8	.36	.875	4182506	4182506
	#10	.375	.875	4192504	4192504
	1/4"	.505	.875	4193756	4192305
	5/16"	.562	.875	4193757	4193126
	3/8"	.652	.875	4193755	4193754
	1/2"	.759	.875	4195005	4195006
	5/8"	.906	1.156	4196257	4196257



Welder Connectors

Socket Camlock 4/0 Cable Mount (Female)
Plug Camlock 4/0 Cable Mount (Male)

Socket Camlock 4/0 Heavy Duty Cable Mount (Female)
Plug Camlock 4/0 Heavy Duty Cable Mount (Male)

Part Number

3250250
3250239

3250250HD
3250239HD



Perpendicularity Bubble Levels

Cap Attachment
Leg Attachment

Part Number

4023335
4182510

